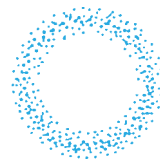


Flange-connection, Large Capacity Hollow Cone Spray Nozzles

Made-to-Order

TAA



[Spray pattern]



[Spray distribution]

- Stable hollow cone spray pattern, even at low pressures, because of the unique vortex chamber design.
- Made of highly wear-resistant SiC (silicon nitride bonded silicon carbide).
- Flange connection.
- Lightweight, weighing less than half of comparable metal nozzles.

[STANDARD PRESSURE]

0.07 MPa

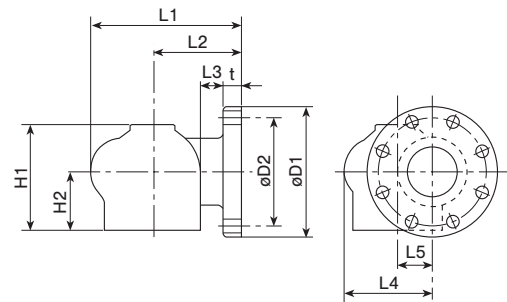
[APPLICATIONS]

- Absorption tower of flue gas desulfurization equipment
- Spraying slurry

Structure	<ul style="list-style-type: none"> • One-piece cast-molded ceramic. • Flanged connection.
Material	<ul style="list-style-type: none"> • SiC (silicon nitride bonded silicon carbide) <p>SPECIAL ORDER MATERIAL: SiSiC (sintered reaction-bonded silicon carbide)</p>

Flange size (inch)	Spray capacity code	Dimensions (mm)										Flange bolt holes (JIS 10K)		Weight (kg)
		L1	L2	L3	L4	L5	H1	H2	øD1	øD2	t	Number of holes	Diameter (mm)	
2	200	151	99	37	74	28	102	57	155	120	22	4	19	1.8
	300	169	106	37	90	35	112	62	155	120	22	4	19	2.0
3	400	184	114	37	100	38	129	71	185	150	24	8	19	3.1
	500	202	122	37	116	45	145	82	185	150	24	8	19	3.7
	650	210	125	36	124	49	150	85	185	150	24	8	19	4.0
	800	210	125	36	124	49	150	85	185	150	24	8	19	4.0
4	1000	253	154	55	143	56	177	100	210	175	24	8	19	6.0
	1200	271	161	55	159	63	187	105	210	175	24	8	19	6.8

DRAWING



[Note] Appearance and dimensions may differ slightly depending on material and nozzle code.

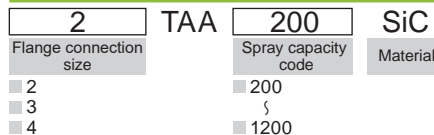
Spray capacity code	Flange connection size (inch)			Spray angle (°)			Spray capacity (L/min)					Mean droplet diameter (µm)	Free passage diameter (mm)
	2	3	4	0.03 MPa	0.07 MPa	0.1 MPa	0.03 MPa	0.05 MPa	0.07 MPa	0.1 MPa	0.15 MPa		
200	○			62	67	69	133	170	200	237	288	1,800	28
300	○			62	67	69	199	255	300	356	432	2,100	31
400		○		62	67	69	266	340	400	474	576	2,100	38
500		○		62	67	69	332	425	500	592	720	}	41
650		○		62	67	69	432	552	650	770	936		50
800		○		75	80	82	532	680	800	950	1,154	3,600	57
1000			○	75	80	82	665	850	1,000	1,187	1,442	3,600	68
1200			○	75	80	82	798	1,020	1,200	1,424	1,731	3,800	68

[Note] 1. Since TAA series nozzles are cast molded, the spray capacity is guaranteed within +/-10% and the spray angle within +/-7° under standard pressure.
 2. The tightening torque to connect the flange must not exceed 30 N·m per bolt.

HOW TO ORDER

To inquire about or order a specific nozzle please refer to this coding system.

Example: 2 TAA 200 SiC



This nozzle series is made-to-order.

TWAA, TAA-PP SERIES Made-to-Order

Also available are TWAA series nozzles for two-directional spray and TAA series nozzles made of chemical-resistant PP.

Series	Picture	Structure	Features	Series	Picture	Structure	Features
TWAA-SiC			<ul style="list-style-type: none"> • Two-directional (opposite directions) jet nozzle made of SiC ceramic. 	TAA-PP			<ul style="list-style-type: none"> • Hollow cone spray nozzle made of PP. • Chemical-resistant and lightweight.